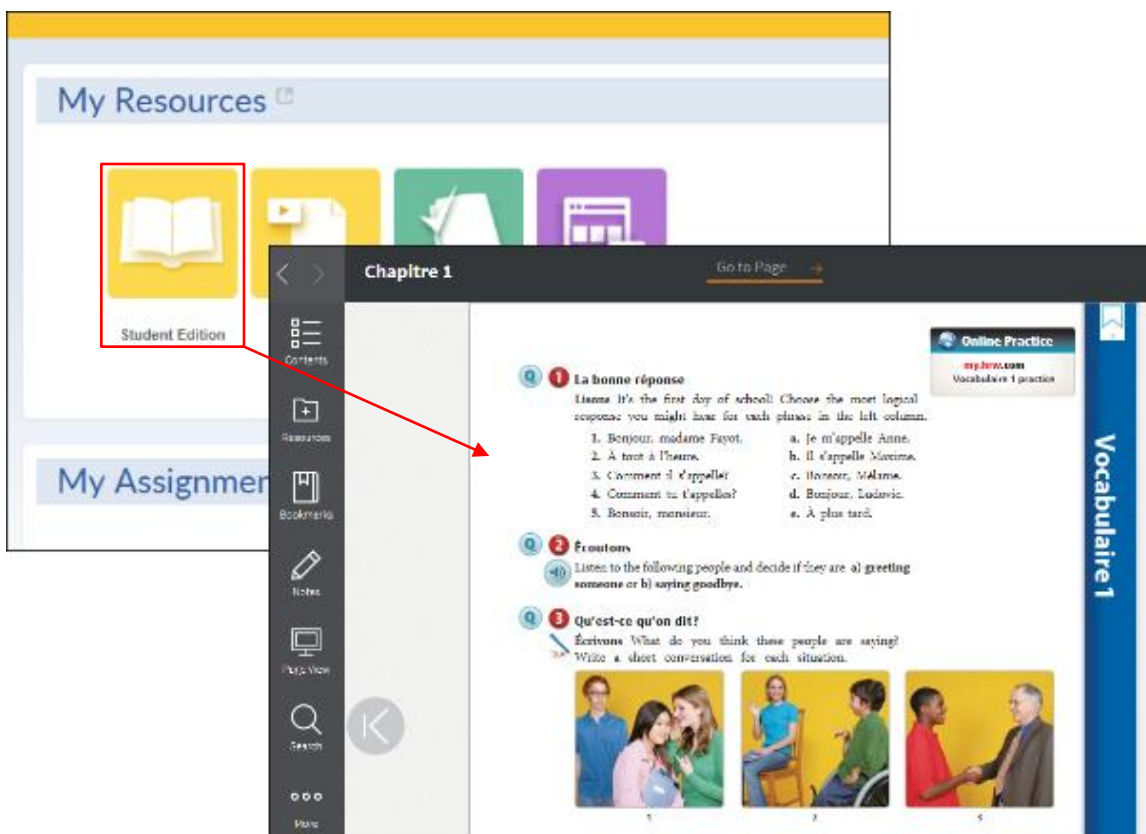


The *Holt McDougal Online Performance Space Student Dashboard* lets you review each answer you enter in the **Student Edition**, **@HomeTutor**, and **InterActive Reader**. Activities are not graded; this tool simply allows you to review your answers and get feedback from your teacher. Additionally, with **Interactive Workbooks**, you can access more activity information and practice questions.

**Requirements:** *Holt McDougal Online* log in information

## Access Student Edition

Using the **Student Edition** dashboard, you can access student activities and enter your answers for the practice questions.

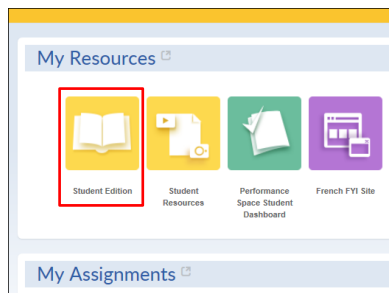


- 1 Log in to *Holt McDougal Online*. The *Holt McDougal Online* dashboard appears.
- 2 Click **Student Edition**. Your eBook appears.
- 3 Click the **Q** icons to access activities and enter your answers. Note that you receive immediate for multiple choice, short answer, and drag and drop activities. Your teacher gives feedback for essay questions.
- 4 Access the **Performance Space Student Dashboard** to review your answers. See the **Performance Space Student** section, *page 3*, for details.

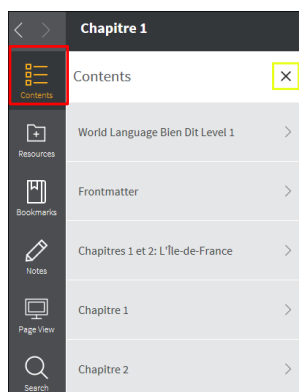
Remember, you can practice and enter answers in the **Student Edition**, **@HomeTutor**, and **InterActive Reader** activities as many times as you need to gain skills. All of your answers are saved and you can review them using the **Performance Space Student Dashboard**. Note that your teacher can also access your saved answers and enter additional feedback.

### Interactive Workbooks

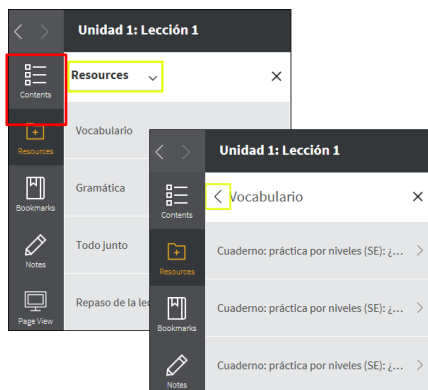
The **Interactive Workbooks** (interactive versions of **Cahier d'activités** and **Cahier de vocabulaire et grammaire**) let you access additional practice activities. Just like **Student Edition**, you receive immediate feedback but different from **Student Edition**, you can only review your answers in the **Interactive Workbooks**.



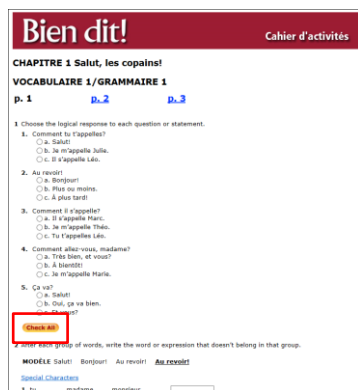
1 Log in to *Holt McDougal Online* and click **Student Edition**. Your eBook appears.



2 From the Table of Contents, find your lesson.



3 Click **Resources** to show your **Interactive Workbooks**. Then, choose the section of the lesson you want to practice and choose your workbook.



4 Enter your answers and click **Check All** to see which answers are correct and incorrect.

**Note:** You will not receive feedback from your teacher in the **Interactive Workbooks**.

To review your answers at a later date simply follow the instructions above to locate your answers for the **Interactive Workbooks**.

# Review Student Activity Answers

## Student

### Access Performance Space Student Dashboard

Using the **Performance Space Student Dashboard**, you can review your answers for the practice activities in **Student Edition**, **@HomeTutor**, and **InterActive Reader**. You can also review any feedback that your teacher enters during the teacher review.

- 1 Click **Performance Space Student Dashboard**. The **Performance Space Student Dashboard** appears. Practice session responses display with the most recent answers at the top of the list.
- 2 From the **Performance Space Student Dashboard**, you can review your answers and teacher feedback. You can scroll through the display or you can search for a specific activity and response.

Review the **Performance Space Student Dashboard** layout on *page 4* to discover how you can see your activity answers and your teacher's feedback.

# Review Student Activity Answers

## Student

### Performance Space Student Dashboard Layout

Remember, you can only see your answers and teacher feedback for **Student Edition**, **@HomeTutor**, and **InterActive Reader** practice activities in your **Performance Space Student Dashboard**.

- A** Displays main page of the **Performance Space Student Dashboard**.
- B** Close the **Performance Space Student Dashboard**.
- C** Enter text to search for an answer containing the text.
- D** Click **More...** to see additional search options. For example, enter a date range or display answers with teacher feedback only.
- E** Click the refresh button to update the page with current information.
- F** Displays your current activity as well as the type and number for each type of activity.
- G** Click the star to highlight the activity.
- H** Shows the unit, lesson, and activity title. Click any title to see your answers.
- I** Identifies the activity type such as multiple choice, essay, and short answer.
- J** Shows the date and time your activity answers were saved.